

POWER
INTERFACE
0814500

FUSE 5X20
T-1 A (230V)
T-2 A (120V-100V)

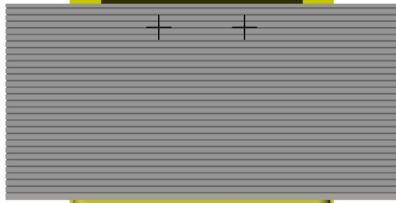
BLACK

BLACK

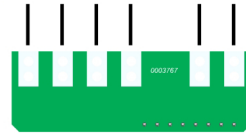
PCB TRANSFORMER
- 0004409 (230V)
- 0004410 (120V-100V)



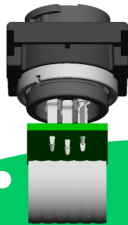
TRANSFORMER
0003994 (230V-120V)
0004106 (100V)



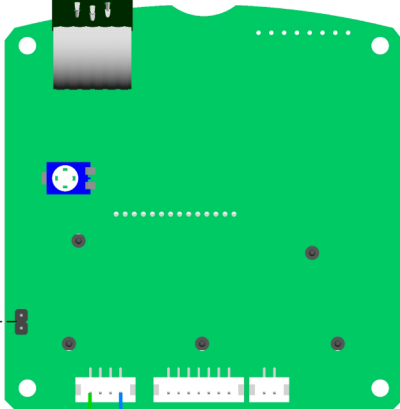
PCB SECONDARY
TRANSFORMER
0004458



TOOLS CONECTION



CONTROL PCB
0005276



RESET
PASSWORD
0003415



GREEN-YELLOW

GREEN-YELLOW

GROUND
TERMINAL

BLUE

